

ScanX  
ultrasound



# **Your New ScanX Quick User Guide**

**Congratulations** on the purchase of your ScanX system, we are excited for you to get scanning on it. This user guide will hopefully talk you through all the basics of the system. We do also offer training videos on our YouTube channel, simply scan the QR code below or enter the following URL

<https://www.youtube.com/playlist?list=PLLxd4rYKt0BrH6UwdfkrrPZINvDIM4BVt>



## GETTING STARTED WITH YOUR SCAN X

Connect your probe to the tablet and remember, never connect, or disconnect your probe in live scanning mode. Connect your probe **before** opening the Scan X application.

To turn on the ScanX press and hold down the power button on the top left of the screen.

Once the Tablet has turned on, **Double Tap** the ScanX icon located on the left hand side of the screen. This will start the scanning application.

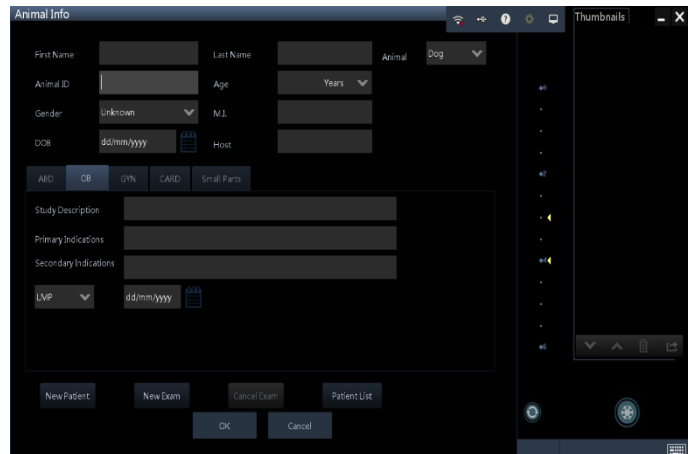


Once you see this screen, you can start scanning.

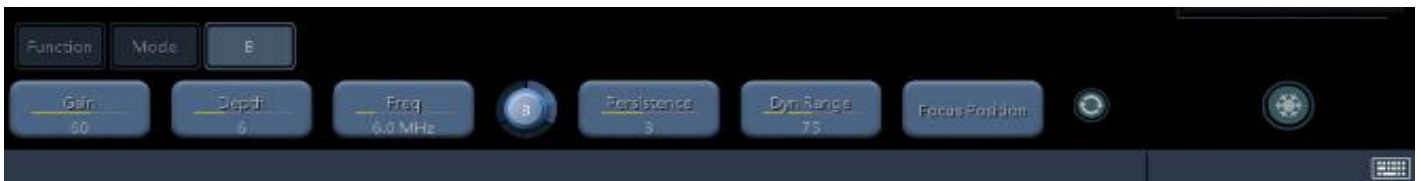
**To Enter patient data:**

1. Select Function and Info to set up a new patient.
- 2.

- a **<New Patient>**  
Enter patient information in the **<Patient Info>** screen & press 'OK.'
- b **<New Exam>**  
To start a new exam for a saved patient, the recorded. Information can be obtained through **<Patient List>**
- c **<Patient List>**  
To start a new exam for a saved patient. Tap **<Patient Name>**.



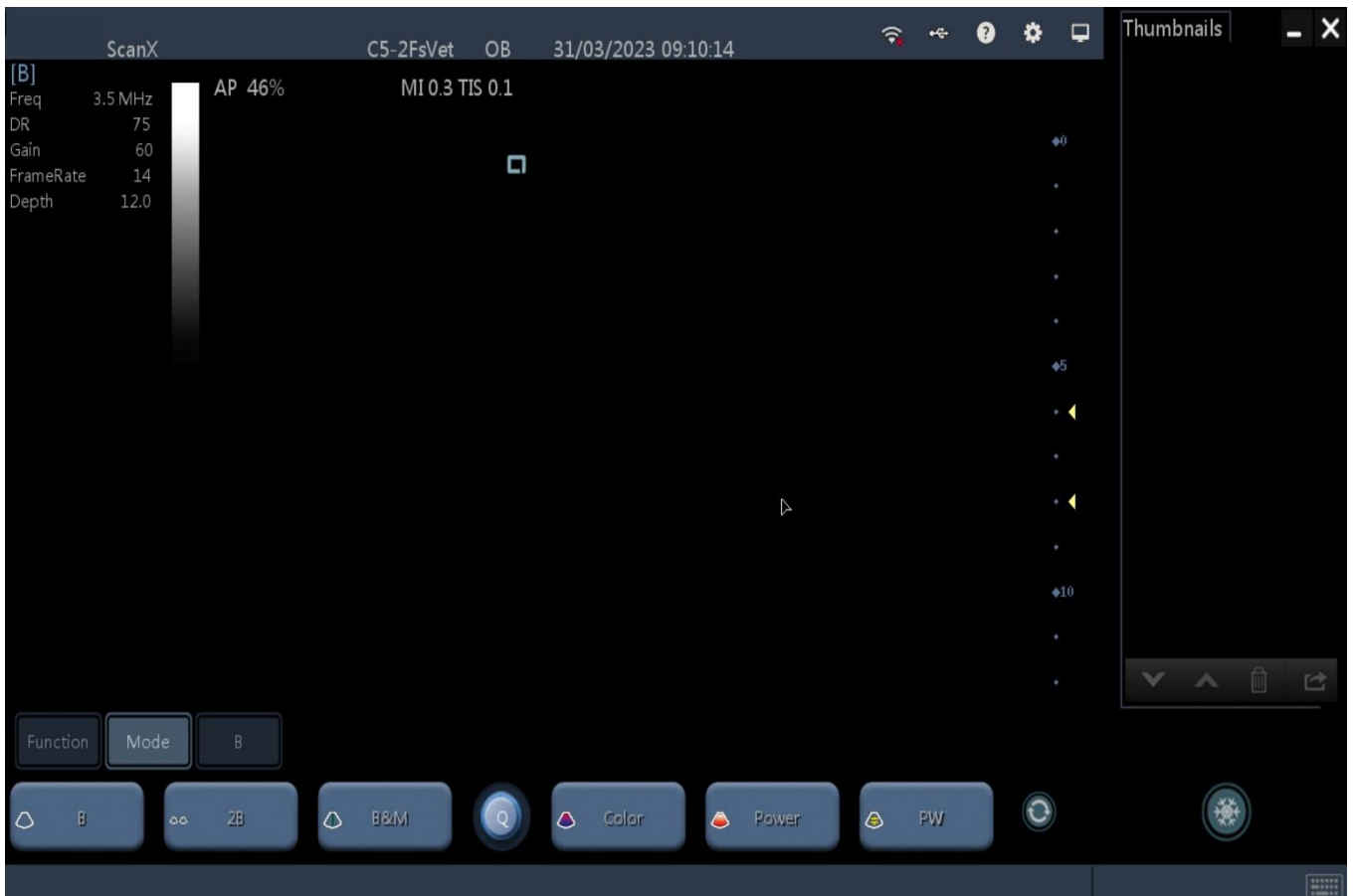
**To resume live scanning and return to main screen, press OK to save or cancel and then Press B for live scanning mode.**



GAIN	DEPTH	FREQUENCY	PERSISTENCE	DYN RANGE	FOCUS POSITION	OTHER	FREEZE
<p>Amplifies the returning signal.</p> <p>Increase Gain if your image is too dark and decrease if your image is too bright.</p> <p>Tap <b>GAIN</b>.</p> <p>Use finger to <b>increase Gain by tapping spot to the RIGHT</b>. This will increase the brightness of your image.</p> <p>Tap to the <b>LEFT</b> to decrease the Gain and reduce the brightness.</p> <p>Do not drag your finger to adjust.</p>	<p>Utilize as much of your scanning area as possible by reducing your depth so that your region of interest fills your screen.</p> <p>Tap <b>DEPTH</b>.</p> <p>You will see the scale on the RIGHT of your image. Each dot = 1 cm.</p> <p>Tap the bar to the desired location. Do not drag your finger.</p> <p><b>LEFT</b> reduces the depth to scan shallower.</p> <p><b>RIGHT</b> increase your depth to scan deeper into the body.</p>	<p><b>Higher Frequency</b> = Greater resolution but reduced penetration.</p> <p><b>Lower Frequency</b> = Reduced resolution &amp; greater penetration.</p> <p><i>Use the highest frequency possible to reach the necessary depth to view what you aim to see.</i></p> <p>Tap <b>FREQ</b> this will display the available frequency ranges for the probe you have connected.</p> <p>Tap the <b>FREQUENCY</b> of your choice.</p>	<p><b>We suggest you leave PERSISTENCE on the default setting.</b></p> <p>Adjusting PERSISTENCE changes the frame rate per second. Higher frame rate will cause a delay between probe and image.</p> <p>Lowering the PERSISTENCE will increase the responsiveness .</p>	<p><b>Dynamic Range alters the number of grey shades in the image</b></p> <p>Lowering the dynamic range will reduce the number of grey shades in the image and give you a more contrasty image.</p> <p>Increasing the dynamic range will give you a much smoother image as you get more grey shades in the image</p>	<p>Tap <b>FOCUS POSITION</b>. Do not drag to adjust.</p> <p><b>Move to the LEFT or RIGHT to adjust the FOCUS POSITION of your image to where you want to see the most detail.</b></p> <p>Ultrasound beam will be nipped in at the level of interest.</p>	<p><b>It is suggested to leave ACOUSTIC settings on the default setting.</b></p> <p>Increasing the ACOUSTIC SETTING increases the acoustic signal into the body, whereas decreasing it lowers the signal. It is ideal between 50% - 80%. It is not recommended to exceed 80%.</p> <p>Adjusting the <b>GREY MAP</b> is personal preference.</p>	<p>Freezes an image to Save.</p> <p>Press <b>Snowflake</b> icon on right side of bottom screen.</p> <p><b>To unfreeze, touch and drag snowflake icon.</b></p>

### Saving an image:

- Use the **<Freeze>** icon to freeze the image.
- Click the **<Save>** button that appears to save a still image. Alternatively click **<Save Cine>** to store a video clip.
- Click and drag the **<Freeze>** button to the right to resume live scanning.

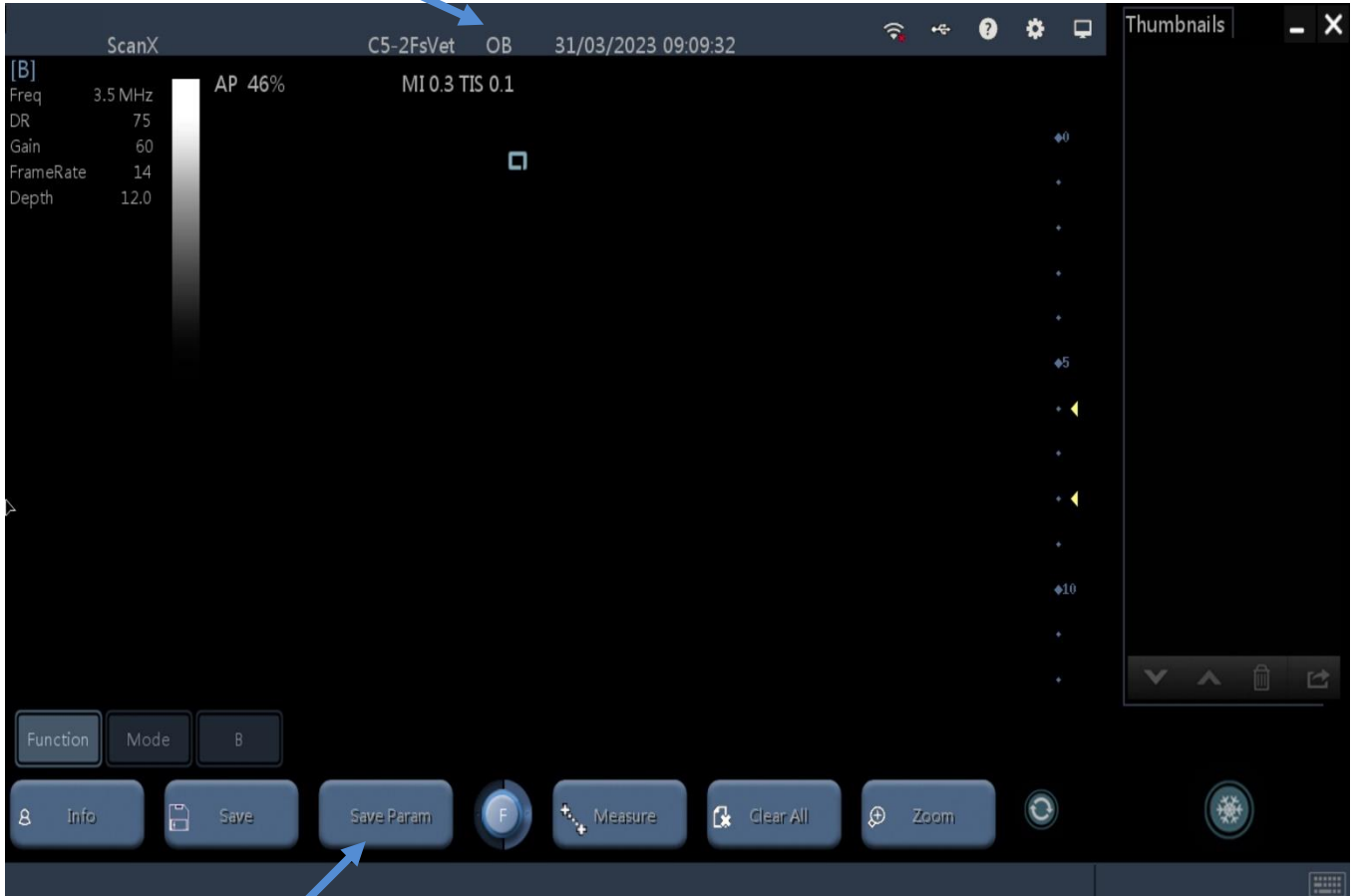


### Mode options:

- **B** – this will take you to your normal 2D imaging mode, press this to reset to 2D imaging and come out of any Doppler modes you have put on.
- **2B** – this gives you split screen, allowing you have a frozen 2D image on one side of the screen and a live scanning image on the other side.
- **B&M** – this will give you an M-mode image. The cursor will appear on the system, and you can adjust the position by touching the cursor and dragging it to your desired place. M-mode will just scan along the line of the cursor, giving you better temporal resolution.

*Color, Power and PW are not active on this system so will not activate when you press them.*

Preset



### Saving a Preset:

If whilst you have been scanning you have changed some settings, you can save these as a preset for future scans.

- Hit the **<Function>** key followed by **<Save Param>**
- When the new text box comes up, hit **<OK>**
- This will overwrite the current preset you are in. You can check which preset you are in by looking at the top of the screen. In this image we are in **OB**
- To check your presets, hit the cog button on the top right hand side of the screen.
- Once in this settings menu, go down and select the **Image Preset** tab

S C A N X  
u l t r a s o u n d

S C A N X  
u l t r a s o u n d

**PUMD**

BY [PORTABLEULTRASOUNDMACHINES.CO.UK](http://PORTABLEULTRASOUNDMACHINES.CO.UK)

S C A N   
u l t r a s o u n d



[Type here]

S C A N X  
u l t r a s o u n d