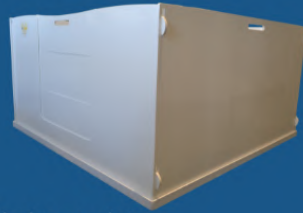


## Setting Up Your Whelping Box

### SINGLE BOX



- Start by laying out your pieces.
- Place your bottom pan.
- Front and back walls have hooks, while side walls have slots.
- Connect your front wall with a side wall by inserting the hooks into the slots.
- Connect all four walls.
- Next, insert your puppy rails, if they do not drop in easily, rotate them 90°.
- Lastly, insert the front door of your choice.

# Conversion Kits!

## Adding a Box Addition Kit to a Single Box

- Remove puppy rails and set aside.
- Disconnect a side wall and flip around so inside runner is facing outward, set aside.
- Connect middle wall with puppy door in place of the side wall you just removed.
- Place the bottom pans together, aligned and touching.
- Connect your Weaning Pen side walls to your middle panel – side walls have small notches cut out (bottom-front) to fit over bottom pans.
- Connect the wall that was set aside.
- Finally, return the puppy rails.
- Your Single has converted to a Double with a weaning pen.

### DOUBLE BOX

- Start by laying out your pieces. Align bottom pans side by side.
- Front and back walls have hooks, while side walls have slots.
- Connect front wall with side walls by inserting hooks into slots.
- Connect Middle Panel with the Puppy Door.
- Next, insert puppy rails, if they do not drop in easily, rotate them 90°.
- Lastly, insert the front door of your choice. Your front box is ready!
- Connect your Weaning Pen side walls to your middle panel – side walls have small notches cut out (bottom-front) to fit over bottom pans.
- Connect back wall. Your Weaning Pen is ready!

## Converting a Double Box into Two Singles

- Remove puppy rails, separate Weaning Pen by disconnecting the middle wall. Separate the bottom pans.
- Replace the middle wall with the new back wall.
- Return your rails. Your first box is ready.
- Next, place bottom pan in the location you would like for your 2nd box.
- Connect new front wall with door. Your 2nd box is complete!

Please note with conversion kit – 2nd box does not include puppy rails.



## Care and Cleaning

Your PetTech Whelping Box is designed to withstand a lot! A key benefit of the material is that dirt and grime cannot grab hold of it, therefore a simple warm/hot soapy water solution will usually do the job. For tougher cleaning jobs a chemical solution may be used. Although it is very chemical resistant, it is advised to avoid harsh solvents and acids.